

Bass Marimba (low F 4.5-oct.)

Dedicated to T.U. Percussion Ensemble

# Hapimelo (Revised Edition)

加藤大輝

KATO Daiki, Op. 106b

♩=80  
*tremolo*  
*f*

**10** *non tremolo*  
*f*

16 **18**  
*mf*

22 **26**

28

**34**  
*mp*

40

**46**  
*mp* *f*

53 **54**

Hapimelo (Revised Edition) - Bass Marimba (low F 4.5-oct.) - 2 -

59



65



71



77



83



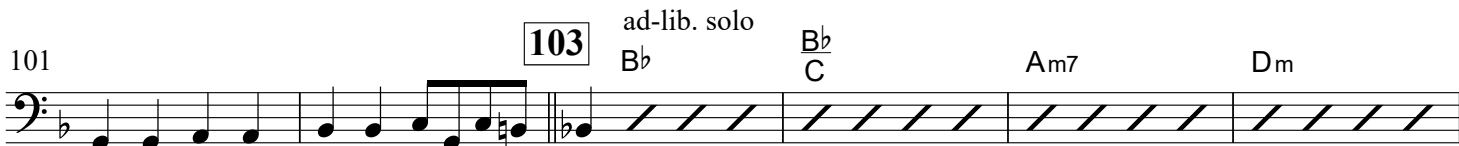
89



95



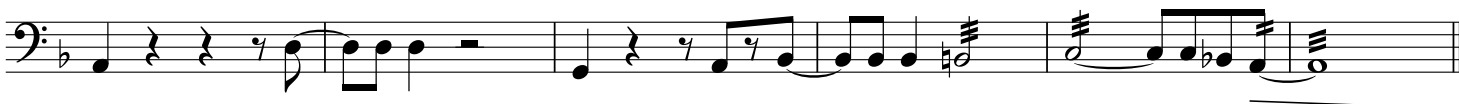
101



107



113



Hapimelo (Revised Edition) - Bass Marimba (low F 4.5-oct.) - 3 -

119

Musical notation for measure 119, bass clef, key signature of one flat. The measure begins with a fermata over a whole note chord, followed by a series of eighth notes and a final quarter note with a sharp sign. A dynamic marking of *f* is present.

131

Musical notation for measure 131, bass clef, key signature of one flat. The measure consists of a continuous eighth-note pattern. A dynamic marking of *mp* is present.

137

139

Musical notation for measures 137 and 139, bass clef, key signature of one flat. Measure 137 features eighth notes with accents and a dynamic marking of *f*. Measure 139 continues the eighth-note pattern.

142

Musical notation for measure 142, bass clef, key signature of one flat. The measure consists of eighth notes.

147

151

Musical notation for measures 147 and 151, bass clef, key signature of one flat. Measure 147 features eighth notes with accents. Measure 151 features eighth notes with accents and a dynamic marking of *p sub.*

152

Musical notation for measure 152, bass clef, key signature of one flat. The measure consists of eighth notes with a dynamic marking of *mp* and *mf*.

157

159

Musical notation for measures 157 and 159, bass clef, key signature of one flat. Measure 157 features eighth notes with accents and a dynamic marking of *f*. Measure 159 features eighth notes.

163

Musical notation for measure 163, bass clef, key signature of one flat. The measure features eighth notes and ends with a double bar line and repeat sign.